



www.csoft.com

WiselImage 16 for Windows

WiselImage®

- The Ultimate image and vector processing tool
- Automatic R2V and V2R conversion
- Look and feel of a 2D CAD application
- Autodesk DWG 2016 support
- ABBYY FineReader 10 in Pro version
- Intelligent raster selection and editing
- Open Architecture with COM interface
- Batch processing
- Advanced PDF engine
- Print Images
- Custom utility tool

What is WiselImage?

WiselImage is a new generation of 2D standalone application for raster editing, raster-to-vector conversion and drawing revision. WiselImage enables you to make quick changes, editing, correction or automatic and semi-automatic raster-to-vector conversion of technical drawings, scanned maps, plans, drafts, sketches and other graphics. It blends raster and vector, CAD functionality and image processing capabilities perfectly – everything in a single cost-effective application.

Who needs WiselImage?

WiselImage is the solution for everybody who focuses not only on the new design but also on restoration, updating and drawing revision. For them WiselImage is a better CAD than your favourite CAD. This makes WiselImage a one-stop-solution for a wide range of applications – GIS, cadastral, aerial and satellite image processing, architecture, engineering, schematics to mention but a few.

WiselImage features

Native CAD-style interface with command line and layouts with viewports, combined with high-end image processing, results in a strong synergistic effect! WiselImage works with 2016 DWG files exactly as a CAD application and processes raster files as the best image processing application. It looks like CAD as its workspaces include Drawing Layouts and Viewports. Dimension and Line Styles, Hatch types and User Coordinate Systems, everything are very common to CAD user. The other side of WiselImage is a set of premium raster tools to process scanned drawings, satellite imagery, or other raster graphics. And the crossroad of raster and vector graphics is the WiselImage capabilities to work with raster and vectors together as if it is the single vector drawing.

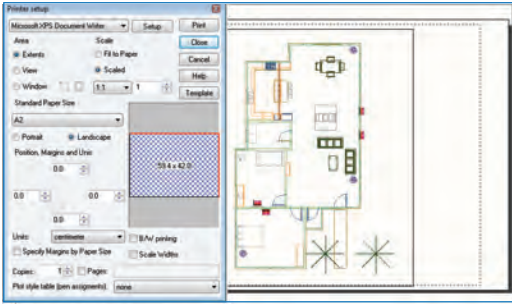
What are WiselImage's benefits?

WiselImage provides the most advanced solution for raster, vector and raster-to-vector conversion of raster images on the market. With the powerful suite of tools of WiselImage you can edit scanned drawings and maps easily. WiselImage allows you to save redrafting time and boost up your productivity.

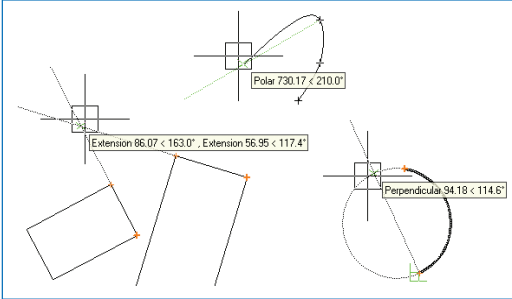
One step from scanner to CAD

Large format scanners produce high-quality black and white, grayscale, or colour raster images. To effectively transfer scanned drawings to CAD, efficient post-processing software is necessary; the ideal solution is WiselImage. Built-in is a high-end scanning module called WiseScan with native support for most wide-format scanners. Image cleanup, correction, calibration, bit-depth reduction and raster-to-vector conversion with WiselImage eliminates repetitive and time-consuming manual procedures.

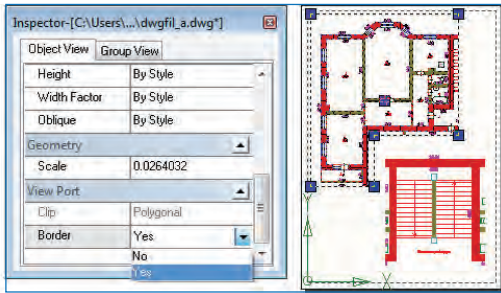




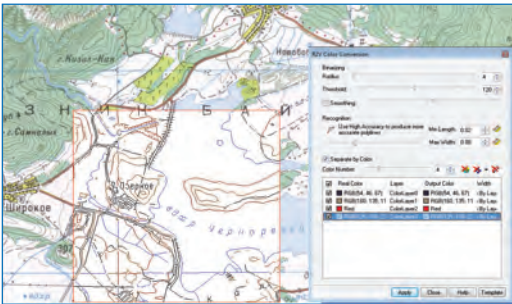
Print Setup and Layout



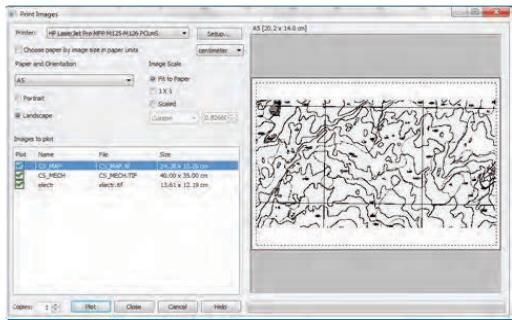
CAD drafting tool



Viewport with polyline contour



Colour raster to vector conversion



Print Images

High quality image processing with precision

Exact calibration is essential when processing scanned drawings. WiselImage offers multiple options for selecting the most suitable method, importing coordinate values or as signing point positions manually. High quality transformation algorithms provide very accurate results.

Full colour images are huge so it is vital to minimize image file sizes. WiselImage can do this without any loss of information. Coloured areas can be combined according to colour similarities or by referring to their distribution frequencies. With the help of this technology the number of colours in an image can be reduced from millions to tens.

In WiselImage it is possible to crop, change resolution, scale, deskew, and calibrate colour and greyscale raster images. It is possible to change brightness, contrast, hue and saturation and adjust the colour gamut, improve image quality and apply colour filters. Users can easily manage the colours of the image and create/edit LUT files. It is easy to edit, construct or add information onto these images, even rasterizing vectors to generate raster file as often required for compliance purposes. Merging monochrome and colour images is also a one-click task.

Intelligent raster objects and tracing

WiselImage offers several advanced options for working with raster and vector data. One such is the unique technology to select raster objects or separate them into layers. This feature is based on the intelligent selections and the smart Wise Object (text, hatches, and lines) selection. WiselImage has an advanced tracing function (semi-automatic – interactive raster to vector conversion) for colour, greyscale or monochrome images. In addition to easy detailed objects tracing in WiselImage, it is possible to trace raster shapes that correspond with vector templates. Select a raster shape and WiselImage will automatically match it to the appropriate vector object from a default Symbol Library or a customized library created to match user requirements. The polyline tracing feature includes auto-detection of tracing direction.

WiselImage for CAD and GIS users

WiselImage is fully featured with all typical 2D-CAD tools. It has an advanced Viewports, Layouts and Layers support. Its vector drawing and editing capabilities are comparable to any industry-standard 2D CAD package. Vector objects (Text, Dimensions) have associated Styles similar to e.g. AutoCAD. WiselImage can read and write most popular CAD and GIS formats. The data exchange capability of WiselImage makes for a smooth transition from a CAD or GIS-data digitizing application to WiselImage.

'Pro' means professional

Automatic Raster-to-vector conversion. The professional version of WiselImage is WiselImage Pro. It features automatic conversion of scanned drawings to CAD files, one-by-one or in batch mode - even overnight. Conversion after fine-tuning of the template parameters with the built-in preview allows for very precise results. Templates can be named, saved and called as required. The result of a vectorization will include vector graphics and text. OCR is provided by the world leading FineReader OCR Engine 10.0.

Vector enhancement tools. WiselImage Pro has a comprehensive set of tuning tools for the auto-correction of vectors obtained as a result of a raster-to-vector conversion, such as merging a group of vectors to an object of a given type (e.g. some segments to an arc or circle), trimming, extending and more.

Open architecture. The COM interface as well as built-in script editor opens new horizons for 3rd-party developers. There are no other CAD software with raster processing and R2V functionality offering an open programming interface.

Your local partner is:

CSoft



CSoft AS
Adolph Tidemandsgate 36,
N-2000 Lillestrøm, Norway
E-mail: sales@csoft.com
Internet: www.csoft.com